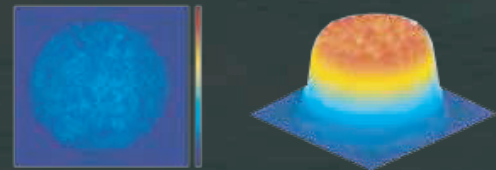


# Q-10 Ultimate

Q-Switched & Long pulsed Nd:YAG Laser (2 In 1) is very cost effective laser and has very luxury design.

Optimised Technology makes perfect Flat Top – Beam Mode



## Q-terra Q10

### Technical Specification

Item	Q-Switched Nd:YAG Laser	
Wavelength	1064nm/532nm /585nm/650nm	
Operating mode	1064nm Mode /532nm Mode 585nm Mode / 650nm Mode Genesis Mode	
Pulse Energy	1064nm Long pulse	N/A
	1064nm (Single)	Max. 31.85J/cm2 1000mJ
	1064nm (Twin )	Max. 57.32J/cm2 1800mJ
	1064nm (Genesis)	Max. 143.30J/cm2 4500mJ
532nm (Single)	Max. 15.92J/cm2 500mJ	
	532nm (Twin)	Max. 15.92J/cm2 500mJ
Fractional Mode	585nm	Max. 7.96J/cm2 250mJ
	650nm	Max. 4.78J/cm2 150mJ
Pulse Width	Nd:YAG	5-6ns
Spot Size	2~10mm (1064/532nm) 2mm (585/650nm)	
Pulse Rate Smart protocol installed in the device	Max. 1Hz -10Hz	
Aiming beam	Diode 650nm	
Optional Handpiece	585,650Hand piece Fractional handpiece	

## Q-terra Q10 Ultimate

### Technical Specification

Item	Q-Switched Nd:YAG Laser	Long pulsed Nd:YAG Laser
Wavelength	1064nm/532nm 585nm/650nm	1064nm
Operating mode	1064nm Mode / 532nm Mode 585nm Mode / 650nm Mode Genesis Mode	Long pulse Mode
Pulse Energy	1064nm Long pulse	N/A
	1064nm (Single)	Max. 31.85J/cm2 1000mJ
	1064nm (Twin)	Max. 57.32J/cm2 1800mJ
	1064nm (Genesis)	Max. 143.30J/cm2 4500mJ
	532nm (Single)	Max. 15.92J/cm2 500mJ
	532nm (Twin)	Max. 15.92J/cm2 500mJ
	585nm	Max. 7.96J/cm2 250mJ
650nm	Max. 4.78J/cm2 250mJ	
	Pulse Width	Nd:YAG
Spot Size	2~10mm (1064/532nm) 2mm (585/650nm)	
	Two handpiece- 2-10mm, 11-15mm (1064nm)	
Pulse Rate Smart protocol installed in the device	Max. 1Hz -10Hz	Max. 0.5Hz -2Hz
Aiming beam	Diode 650nm	
Optional Handpiece	585,650Hand piece Fractional handpiece	



# Q-terra Q10

**EBS**  
MEDICAL EQUIPMENT  
[www.ebs-medical.dk](http://www.ebs-medical.dk)

**EBS**  
MEDICAL EQUIPMENT

**EBS**  
MEDICAL EQUIPMENT

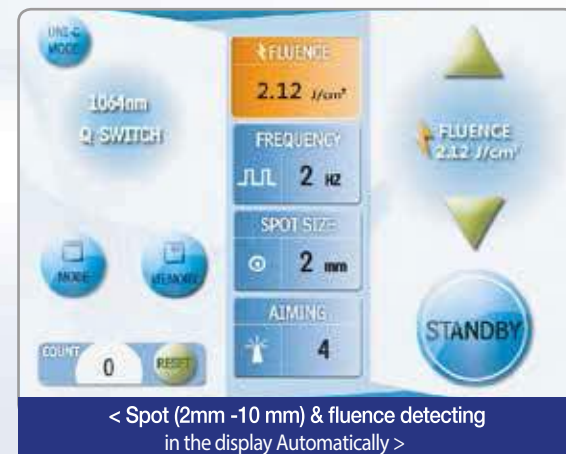
# Q-10



Q-Switched Nd:YAG laser provides high power output upto 57.32J/cm<sup>2</sup> at 1064 nm.

Good choice to change your skin destiny

"Q-10 is the best choice of achieving the treatment result for all kinds of pigment lesions.



## Brief Introduction

### Brief

- Marvelous Q-10 provides satisfactory results by the effective removing treatment at almost every pigment troubles. It can remove the targeted pigments selectively but very little damage to the dermis and epidermis. Our PTP Mode has the patient feel little pain and the skin regenerate sooner.

### Applications

- Toning**
  - Melasma
  - Nevus of Ota
  - Café au Lait
  - PIH
  - Wrinkles
- Genesis Mode**
  - Genesis uses PTP Mode.
  - Stimulates the fibrous cells of skin to be rejuvenated well.
- 585nm (Dye hand piece)**
  - Vascular Lesions
  - Hot Flush
  - Melasma
  - Post Acne
  - Inflammatory Acne
- Carbon Peel**
  - Carbon Peel by removing dead skin cells with carbon cream.
  - Large Pores, Acne, Skin Whitening.
- Treatment of Pigment Lesions**
  - Café au Lait
  - Seborrheic Keratos
  - Age Spot
  - Solar /Simplex Lentigo
  - Tattoo
  - Nevus of Ota
  - Blue ABNOM
- 650nm(Dye hand piece)**
  - Pigment on Epidermal
  - Freckles

### Product View



- Handpiece**
  - Zoom hand Piece(2~10mm, Standard)
  - Fractional Hand Piece for 1064nm(Optional)
  - Dye Hand Piece (585nm, optional)
  - Dye Hand Piece (650nm, optional)

### Features

- \* Effective to remove Tattoo
- \* Good and Safe to treat the Pigment Lesions in dermis and epidermis
- \* Uni-Q Mode is very useful for the operators
- \* Various Hand Pieces are available as follows;
  - Zoom Hand Piece spot size 2~10mm (Standard)
  - Fractional Hand Piece for 1064nm (Optional)
  - Dye Hand Piece 585nm (Optional)
  - Dye Hand Piece 650nm (Optional)
- PTP Mode**
  - Less Pain, Effective against many Pigment Lesions
  - Soonest Skin Regeneration, Minimal useless Damage
  - Less PIH and other Side Effects.

### The Flat Top-beam profile

- Radiates Constant and Even Energy to the treatment point

### Clinical Pictures

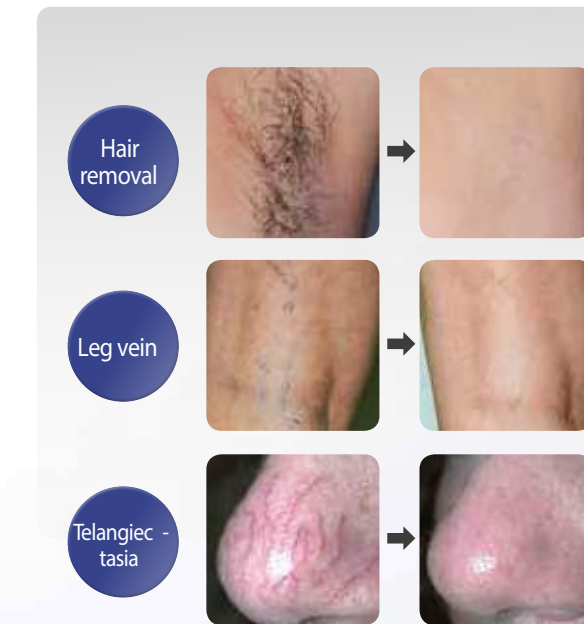


< Before & After >

# Q-10 Ultimate



### Clinical Pictures



< Before & After >

