



# SmartXide TOUCH For Vulvo Vaginal Health

MonaLisa *Touch*<sup>®</sup>

Game Changing  
Therapy for Women Intimacy

Smartxide Touch stands out in **Gynaecology**



**DEKA**  
Innate Ability

## SMARTXIDE TOUCH'S Quick Wins:

Genitourinary Syndrome of Menopause | Postpartum Hypoestrogenism Symptoms  
Genital Functional & Aesthetic Surgery  
Vaginal Laxity | Mild Stress Urinary Incontinence | Labia Majora Hypertrophy

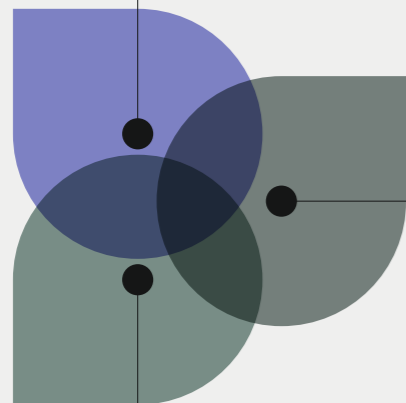
### Key Principles

SmartXide Touch is the truly decisive laser for **MonaLisa Touch**: the best known procedure to treat vulvovaginal conditions in menopausal, breast cancer survivors and hysterectomized women. With the introduction of **RF Touch** it's possible to treat vulvo-vaginal laxity and SUI symptoms expanding the treatable vulvo vaginal conditions.

### Why Choosing SmartXide Touch:

#### Designed Properly for MonaLisa Touch

A special pulse shape – D Pulse - has been specifically developed for treating vaginal mucosa effectively and safely.



#### +50 Peer Reviewed Studies

More than 50 international publications have confirmed the great efficacy and safety of the MonaLisa Touch procedure.

#### RF TOUCH for SUI and Vulvo-Vaginal Laxity

The new single use RF handpiece satisfies completely the vaginal health treatment requests (vulvo-vaginal laxity and SUI).

MonaLisa Touch®

## The Unrivalled Treatment for Genitourinary Syndrome of Menopause

MonaLisa Touch acts on atrophic vaginal tissue restoring the functionality of vaginal mucosa. It calms down – or even eliminates – the most common symptoms that affect women's quality of life and intimate relationship, such as:

- Vaginal Dryness
- Itching and Burning
- Painful Sex (dyspareunia)



SmartXIDE Touch

THE SCIENCE BEHIND

## HI-SCAN V<sup>2</sup>LR

### Speed and Repeatability of the Treatment

Exclusive **Hi-Scan V<sup>2</sup>LR Probe** - the full-angle applicator emitting laser energy in a **360°** manner ensures quick, perfect and even treatments, that are easily duplicated over different sessions and with different patients.

### Perfect Laser Tissue Interaction

D-Pulse is an exclusive pulse shape, designed by DEKA specifically for the MonaLisa Touch treatment, thus ensuring maximum effectiveness (by using the right penetration depth) without any side effects (control of thermal effect).



### Quick and Painless Treatment

The laser energy to the vaginal walls is provided in a fractional mode (DOT-Therapy): only a small percentage of vaginal tissue is directly affected by the laser.

### Maximum Patient Adaptability

Availability of different types of probes to address the specific clinical and/or anatomic needs of individual patients.





THE SCIENCE BEHIND

Proper for Tightening and SUI

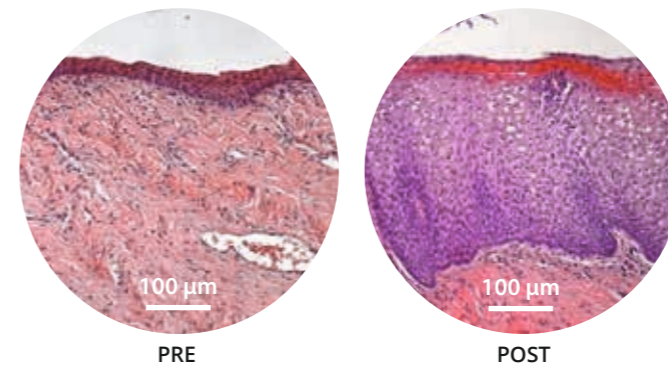
## RF Touch: to Get a Deeper and Uniform Stimulation

**RF Touch** adds a complementary treatment to the CO<sub>2</sub> laser: a deeper stimulation of the connective vaginal mucosa, improving all the problems related to non atrophic flabbing tissues such as **SUI** (Stress Urinary Incontinence) and **Vulvo - Vaginal Laxity**

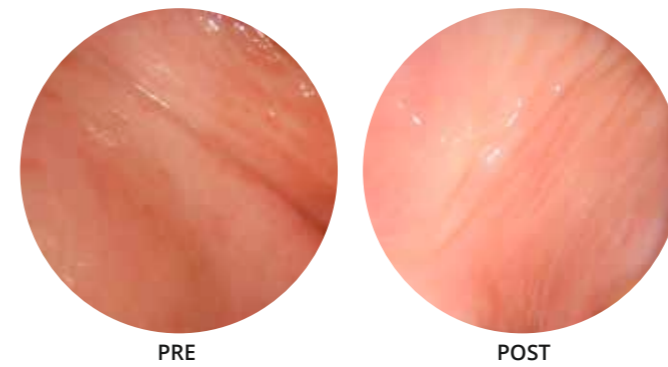


Single Use RF Touch probe

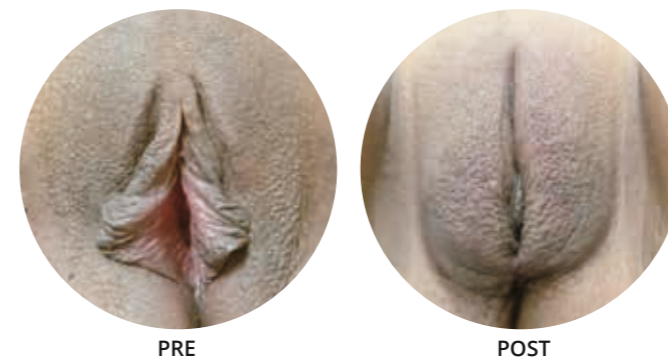
## Clinical Results



MonaLisa Touch treatment. The morphology demonstrate the restored metabolic trophism and dynamics of the whole epithelium. Courtesy of **Prof. A. Calligaro**. University of Pavia, Italy.



MonaLisa Touch treatment. Colposcopic images of vaginal mucosa. Courtesy of **MG. Fallani, M.D.; A. Pieralli, M.D.; Prof. S. Guaschino, M.D.; Prof. C. Penna, M.D.**; Careggi University Hospital. Florence, Italy.



RF Touch treatment. Left labia minora hypertrophy. Courtesy of **P. González Isaza, M.D.** Pereira, Colombia.

## Knowing Our Audiences and Market

The demand for vaginal health treatments is increasing and driven by rising cases of, birthing injuries and urinary incontinence. Increasing popularity of radiofrequency (RF)-based treatments is expected to drive the market expansion further as well.



**OVER**  
**4.4 billion \$**  
VAGINAL TREATMENTS MARKET



**+12.5% CARG**  
OVER THE  
FORECAST YEAR\*



**+29% demand**  
FOR AESTHETIC  
VAGINAL PROCEDURES\*\*

\* [www.grandviewresearch.com](http://www.grandviewresearch.com) (2018)

\*\**Indian Journal of Women's Dermatology* (2012-2015)

## The Floor to Practitioners

“ We started testing MonaLisa Touch® and treating patients in 2012. At the beginning, I was very skeptical about the use of lasers for vaginal stimulation because, at that time, no evidence or credibility were available in Gynecology. With time both clinical and histological results exceeded my expectations! Histological studies, conducted in collaboration with Prof. Alberto Calligaro from the University of Pavia, showed that MonaLisa Touch® treatment restored the mucosa to a pre-menopausal condition, as would occur after an oestrogen hormone replacement treatment.”

**Stefano Salvatore, M.D.**

Associate Professor in Obstetrics and Gynecology, Vita e Salute San Raffaele University  
Head of the Urogynaecology Unit at the IRCCS San Raffaele Hospital, Milan (Italy)

“ A game changer is literally something that alters the way we do things, and we don't have a lot of game changers that come along every day in medicine. I like to use the word game changer with MonaLisa Touch® because it is fulfilling a huge void for women. I was very willing to try this because it's a huge need. It's a huge therapeutic area. Results are almost immediate. As part of the protocol, we had patients that, after their first treatment, hand down they were improved moisture, less pain, less pressure.”

**Mickey Karram, M.D.**

Director of Fellowship Program on Female Pelvic Medicine & Reconstructive Surgery  
The Christ Hospital, Cincinnati, OH (USA)

“ I consider MonaLisa Touch® treatment a milestone option for several urogynecological applications, such as Genitourinary Syndrome of Menopause (GSM), cancer related vaginal atrophy and dyspareunia conditions that do not respond quite well to traditional treatments. All of our patients reported an important improvement either on all the symptoms and quality of life.”

**Pablo Gonzalez Isaza, M.D.**

Specialist in Obstetrics and Gynecology, San Jorge University Hospital, Pereira (Colombia)  
President of Colombian Aesthetics Gynecologists Association

“ RF Touch adds a complementary treatment to the CO2 laser: a customized solution aimed at women's health and well-being and for all those problems that appear with age, hormonal changes and physical damage. Patients often see results immediately, with continuous improvements over the following weeks”

**Paolo Mezzana, M.D.**

Plastic Surgeon, Rome - Italy

THE PERFECT MATCH

## SMARTXIDE TOUCH Strength

Operator and patient total comfort benefits:

- **Unrivalled treatment**
- **Specially designed to treat effectively vulvo vaginal mucosa**
- **The only in depth validated laser therapy for women intimacy**
- **Hundreds of thousands of women successfully treated worldwide**
- **Maximum safety and effectiveness**
- **Your best tool to treat genitourinary symptoms**
- **Enlarged number of patient thanks to RF Touch (both VVA and not VVA)**
- **Double source (Laser + RF) in a stand alone system**
- **360° care of vulvo vaginal health**

**Only for DEKA Users:**  
a great support in medical practice  
**DEKA Club**

7 mirrors  
articulated arm

Integrated  
protocols specifically  
designed for vulvo  
vaginal applications

Bipolar RF source

High precision double  
galvanometer scanner

360° V<sup>2</sup>LR  
probe

RF CO<sub>2</sub>  
Laser source



# Technical Specifications

SMARTXIDE TOUCH - V <sup>2</sup> RL configuration			
<b>Laser Type &amp; Wavelength</b>		CO <sub>2</sub> RF - 10,600 nm	
<b>Pulse Shape Design</b>		CW-SP-DP-HP-UP	
<b>Power</b>		0-60 W	
<b>Accessories</b>		Hi-Scan V <sup>2</sup> LR Scanner System. Wide range of surgical handpieces	
<b>Dimensions and Weight</b>		118 (H) cm x 42 (W) cm x 54 (D) cm   62 Kg	
<b>Electrical Requirements</b>		100-230 Vac – 50/60 Hz – 1200 VA	
<b>HI-SCAN V<sup>2</sup>LR SCANNER SYSTEM</b>		<b>RF TOUCH SINGLE-USE HANDPIECE</b>	
<b>Scanner Area</b>	Max 8x8 mm with 90° and Vulvar Probes	<b>Source</b>	Bipolar Radiofrequency
<b>Scanning Methods</b>	Normal - Interlaced - SmartTrack	<b>Working Frequency</b>	500 kHz
<b>SmartStack Level</b>	From 1 to 5	<b>Treatment Activation</b>	Controlled by footswitch
<b>Probes</b>	360° full-angle both autoclavable and single-use (optional) 90° single-angle (optional)  Vulvar	<b>Effectiveness Treatment Control</b>	Integrated temperature sensor and timer

**CAUTION** - Visible and invisible laser radiation. Avoid eye or skin exposure to direct or scattered radiation. Class 4 laser product.  
This brochure is not intended for the market of USA.



SmartXIDE Touch

**DEKA**  
Innate Ability

Follow us on



[www.dekalaser.com](http://www.dekalaser.com)

Dealer stamp



**DEKA M.E.L.A. s.r.l.**

Via Baldanzese, 17 - 50041 Calenzano (FI) - Italy  
Tel. +39 055 8874942 - Fax +39 055 8832884

#### DEKA Innate Ability

A spin-off of the El.En. Group, DEKA is a world-class leader in the design and manufacture of lasers and light sources for applications in the medical field. DEKA markets its devices in more than 80 countries throughout an extensive network of international distributors as well as direct offices in Italy, France, Japan and USA. Excellence is the hallmark of DEKA's experience and recognition garnered in the sphere of R&D in over thirty years of activity. Quality, innovation and technological excellence place DEKA and its products in a unique and distinguished position in the global arena. DEKA manufactures laser devices in compliance with the specifications of Directive 93/42/EEC and its quality assurance system is in accordance with the ISO 9001 and ISO 13485 standards.