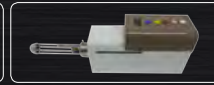




SMAXEL Vaginal treatment mode



Manual LVR Hand piece

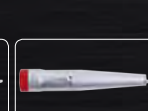


Automatic LVR Hand piece

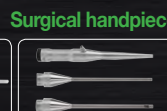
SMAXEL Surgical Mode / Dental Mode



50mm



100mm



E.N.T Hand piece

Dental Handpiece



SMAXEL Fractional Mode



SMAXEL Low Pain Fractional Mode

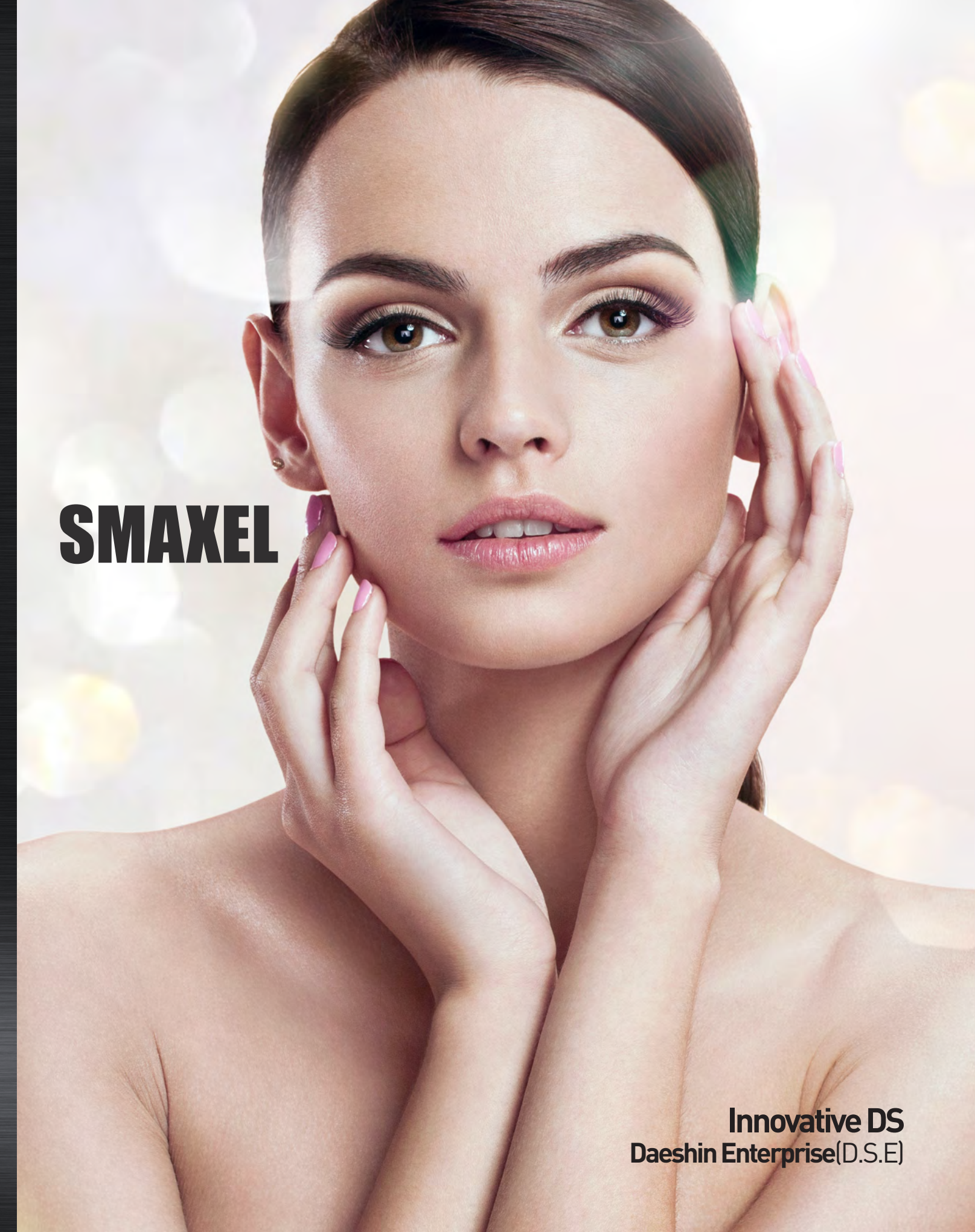


Innovative DS
Daeshin Enterprise(D.S.E)

Smaxel

Technical Specification

Model	SMAXEL	
Laser Type	CO2 Laser	
Wave length	10.600nm	
Laser power	1-40W	
Function		
Aiming Beam	Diode Laser 655nm (5mw) :1-10 Step	
Surgical Mode	Handpiece Type	50mm,100mm(Basic) E.N.T & Dental Handpiece::Optional
	Laser Operation Mode	1. CW 2. Normal Pulse 3. Super Pulse 4. Super Pulse Continuous 5. Ultra Pulse 6. Smart Protocol(General Surgery/Dental Surgery)
	Pulse Duration	· Ultra Pulse : 90us-900us · Super Pulse :1000us-3500us · Normal Pulse : 4ms-20ms
	Repeat Time	OFF, 2ms/500ms adjustable, 5ms, 10ms, 30ms, 50ms, 70ms, 100ms, 250ms, 500ms
Fractional Mode	Beam Mode	Ultra Pulse
	Density Level	1-23 Step(x,y line) ; 9dots-4489 dots
	Operation Mode	Fractional Mode Low Pain Fractional Mode
	Beam Patterns	Array,Grid, Random
	Beam Size	2x2mm - 20x20mm
	Beam Shape	■ ▲ ◆ ●
	Depth Level	1-5 Step
	Handpiece	· Fractional Handpiece(Galvanic Motor) · Vaginal Rejuvenation Handpiece(Optional)
Repeat Time	OFF, 0.5 , 1.5, 2, 2.5ms	
General Features		
Electrical Requirements	220v, 6A, single phase,50/60hz	
Cooling System	water cooling	
Dimensions	350x360x1200	
Weight	52Kg	
Display	10.2 inches color lcd	



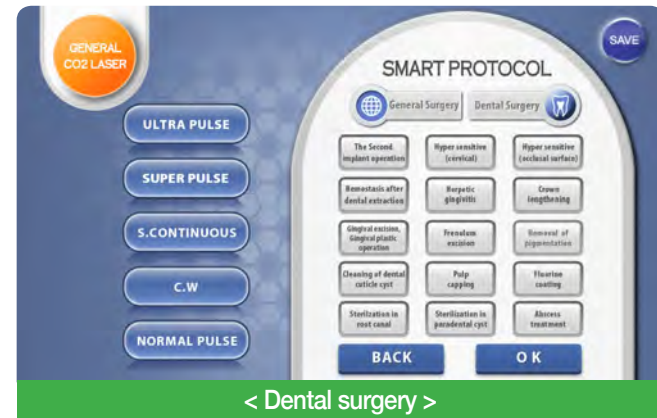
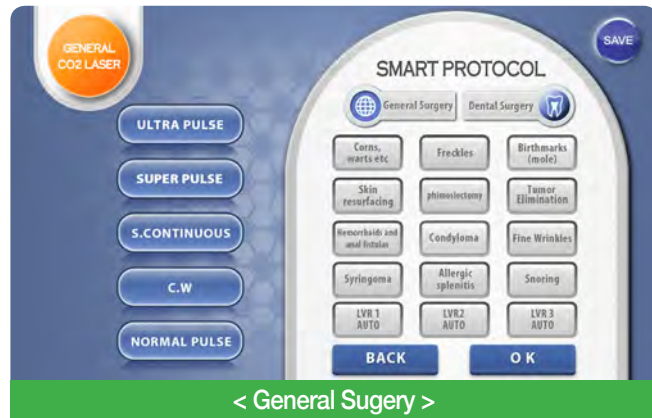
SMAXEL

Innovative DS
Daeshin Enterprise(D.S.E)

www.dsemed.co.kr

Innovative DS
Daeshin Enterprise(D.S.E)

Smart mode for Surgical Field (General Sugery , Dental Surgery)



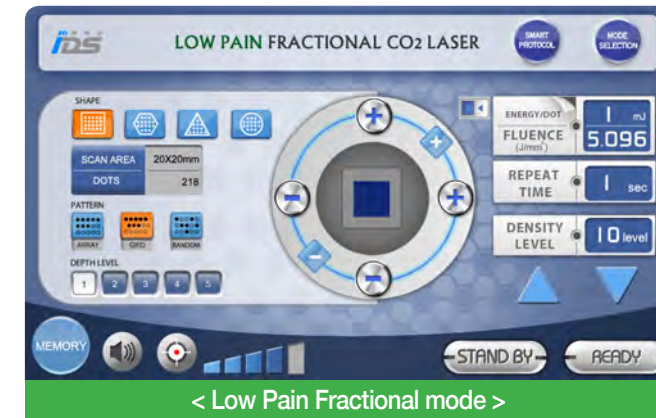
General Surgery Indication

Corns, Warts etc	Freckles
Birthmarks(mole)	Skin resurfacing
Phimosiectomy	Tumor elimination
Hemorrhoids and anal fistulas	Fine wrinkle
Condyloma	Syringoma
Snoring	

Dental Surgery Indication

The second implant operation	Hyper sensitive
Hemostasis after dental extraction	Herpetic gingivitis
Crown lengthening	Frenulum excision
Gingival excision, Gingival plastic operation	Cleaning of dental cuticle cyst
Removal of pigmentation	Pulp capping -Fluorine coating
Allergic splenitis	Sterilization in parodontal cyst
Sterilization in root canal	Abscess treatment

Fractional (Fractional mode / Low pain fractional mode)

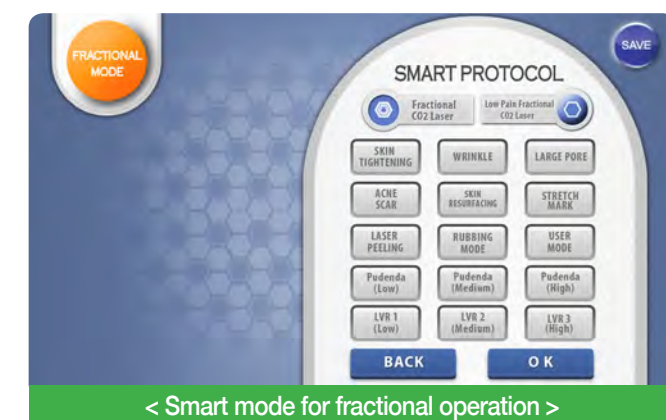
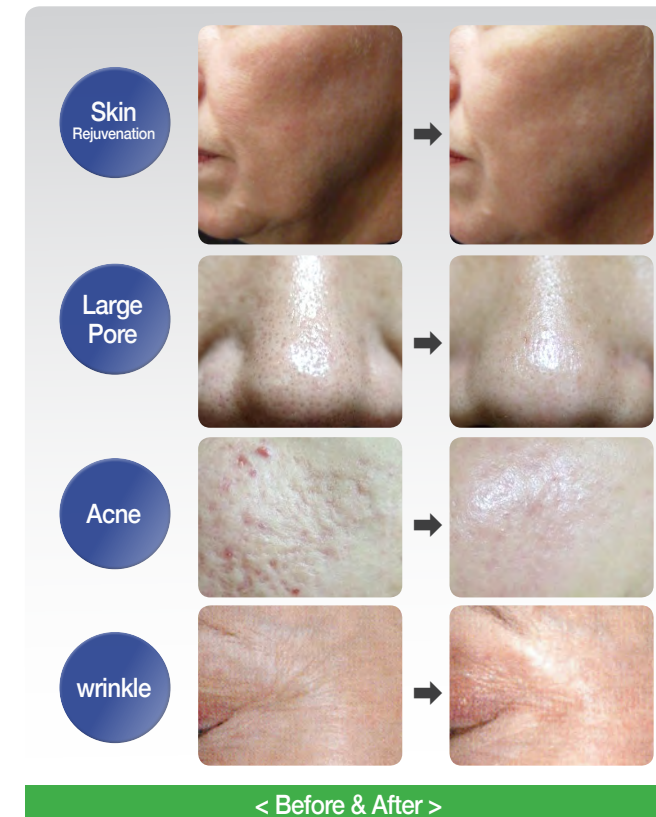


Various Beam Pattern

Various beam pattern for each treatment



Ultra Pulse Beam Minimizes Thermal Damage and Side Effect



Fractional Surgery indication

Skin tightening	Wrinkle	Large pore	Acne scar
Skin resurfacing	Stretch mark	Laser peeling	Rubbing mode
Pudenda	LVR		



Fractional handpiece + LVR Handpiece
(Vaginal treatment)

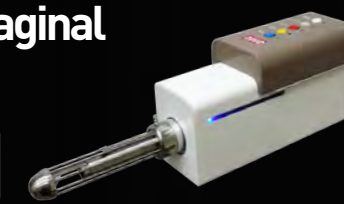
Fractional handpiece (for Labium Treatment)



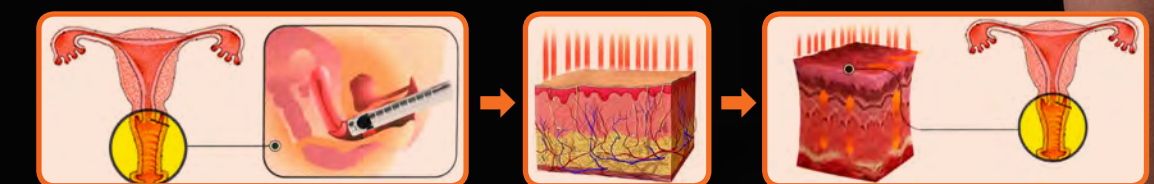
Smart protocol for LVR by Manual Treatment



Fractional handpiece + Auto Vaginal Rejuvenation Handpiece



How does it work ?



high density laser beam delivers to vagina widely and it makes vaginal tightening & rejuvenation.

