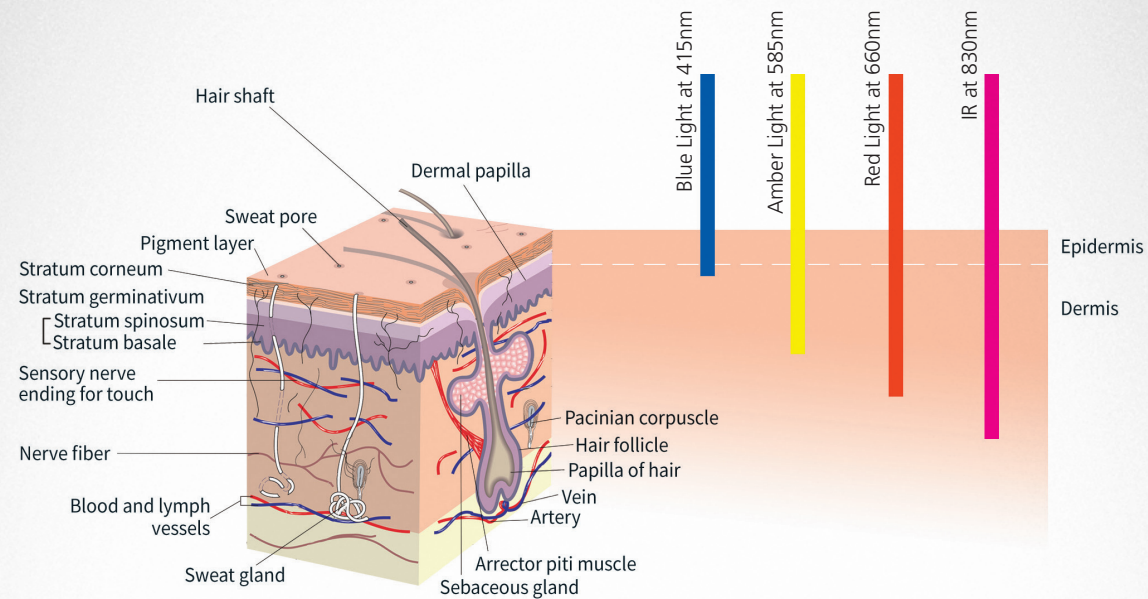


Four Wavelengths in each LED



Maximum Effectiveness through Combination of Various Wavelengths

Skin Brightening Treatment

Blue Light (415nm) + Amber Light (585nm) + Red Light (635nm)

Acne care

Blue Light (415nm) + Red Light (660nm)

Pain Relief

Red Light (635nm) + Infrared Light (835nm)

Scalp Treatment

Red Light (635nm) + Infrared Light (830nm)

Redness

Amber Light (580nm) + Red Light (660nm)

*Up to 3 wavelengths can be combined.

No LED Panel Change needed for Use of Different Light Mode

It is easy to operate in one LED Panel and incorporate into any practices.

Four treatments and multiple wavelengths in one panel platform stimulate skin cells in various layers to counteract the effects of aging and environment.

CURELUX

The advanced LED light therapy technology starts from CURELUX

CURELUX developed the first LED light therapy device in the world.

Long & strong LED R&D history since 2004 guarantees the quality of its technology.

Now, LED gets more values over light with CURELUX



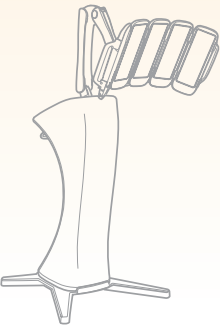
Address #105, Byoksan Digital Valley 3 cha, 271, Digital-ro, Guro-gu, Seoul, Korea
Tel +82-2-2025-1150~3 Fax +82-2-2025-1154 E-mail info@ids.co.kr

CURELUX LLT-1

(LED Light therapy),

Cutting Edge Technology for Photo-Dynamic Technology System

Good handling for doctors
Best treatment for patients
Provide the ultimate experience of
Rejuvenating skin to your patients



Criteria	Detail		Comment
Model	HU-001		
LCD	10.1" TOUCH LCD		1024x600 Pixels
Input	AC 100V/240V 50Hz 5~8.5A		
Output	DC 48V 13A		
Control Board	MAIN BOARD		
	LED CONTROL BOARD		
	4 COLOR LED BOARD		
Rated Life	10000 H		
Wave	415nm	Visible rays	
	585nm	Visible rays	
	660nm	Visible rays	
	830nm	Infrared rays	
Dementions	GUN SIZE	620 x315 x 50mm	
	BOARD SIZE	600 x 600 x 1010.nm	
Weight	Complete product	34KG	



4 in 1

The world's first developed 4 wavelengths in 1 system

Blue Light(415nm)

Reduces active acne
Helps to normalize oil production
Promotes calming and relaxation of skin
Assists in killing bacteria in the skin
Prevents breakouts
Has a deep cleansing effect
Shrinks enlarged pores

Amber Light(585nm)

Stimulates the nervous and lymphatic system
Regenerates damaged tissues
Decreases skin redness & flushing
Decreases skin irritation
Decreases rosacea

Red Light(660nm)

Stimulates the production of collagen and elastin
Smoothes skin texture
Improves skin elasticity
Increases circulation and lymph drainage
Reduces the appearance of fine lines, wrinkles and superficial hyperpigmentation
Allows for bald head and psoriasis treatment

Infrared Light(830nm)

Provides pain relief
Stimulates fibroblasts proliferation
Provides anti-aging benefits to your body
Rejuvenates the skin
Promotes cell regeneration
Heals wounds faster
Improves blood circulation

